
Contents

Title	Author	Page
Articles		
24Acres Community Orchard	David Thomas	7
New Year's Day Football	Ross Clark	5
Playground Update	Alex de Giorgio-Miller	3
Books for Snakehall Farm	Mike Malster	13
Bottisham and Burwell Photographic Club	Daphne Hanson	12
Bottisham Village College Adult Learning		19
Bottisham Village College Primary		4
Burwell and Reach Car Scheme		6
Burwell Museum		12
Burwell Museum Coach Trips		13
Bus Timetable		34
Cambridgeshire Fire and Rescue		13
Church		
Church Services and Events		33
Letter from the Vicarage	Eleanor Williams	23
Contact Information		36
Diary Dates		35
Dyke's End	Frances Dylong-Fuller	18
Crossword		32
Events Team	Debbie Quilter	9
Family Focus	Tasha Bridgeman	19
Food Focus	Catherine Gibson	22
From the Editor	David Parr	2
IT Advice	David Macmillan	6
Jobs		36
Neighbourhood Plan	Nick Acklam	4
Neighbourhood Watch	Kevin Evans	18
Out and About	Joss Goodchild	14
Parish Council		
Grant Fund		24
Know Your Parish Council		24
Meeting Minutes		25
Rosanna's Ramblings	Rosanna Moseley Gore	10
Sport and Recreation		
Burwell Bowls		21
Reach Riders		8&24
Spring Jumble Sale		18
Swaffham Prior Gardeners		16
Swaffham Prior School	Helen Bartley	8
Tales from a Reach Garden	Danuta Gibson	20
Then and Now	Chris Patterson	36
Well Done Felicity!	Hilary Fielding	5
Whats Growing on at Snakehall Farm	Maz Baker	17
Wicken Fen and Anglesey Abbey News	Julia Hammond	16

From the Editor

This is our first edition for 2019, with five more to follow. It's at this time that we ask all our previous advertisers if they want to continue – and pleasingly the vast majority do. They're important people since they provide the money that allows us to print the magazine and distribute copies for free to all villagers.



So, whenever you are looking for someone to provide a service, please check through our advertisers. Ask for recommendations as well, we do not provide guarantees regarding their abilities, but the fact they stay with us year after year probably means that they have satisfied customers in the village.

We've had plenty of village events since our last issue but there are a couple that, in my humble opinion, stand out.

The first was the Seniors Christmas Lunch (see cover photo). It epitomised what this village is exceedingly good at which is deciding on something nice to do and then getting talented volunteers to make it happen. It was a wonderful event and already there is a date in the diary for 2019.

The second was the Christingle service at the church – it was truly delightful. The church was full and it was clear that everyone enjoyed themselves – another event that you might want to put in your diaries for this year.

In this issue can I suggest you have a look at our proposed Neighbourhood Plan creation – being chaired by Nick Acklam. It's an activity which allows us to define our aspirations for the future and when any developments are proposed for the village the planners will pay significant attention to whether they are in keeping with what the village wants. So it's important!

And soon Reach Fair will be with us!

The Events Team continues to get things ready as best it can, but as ever, it'll need some help from villagers to make it the fun event that it always is.

David Parr

davidmparr@btinternet.com or 07887 563720

About the Magazine

The purpose of *Within Reach* is to serve the whole village by circulating information and interesting articles free to every household. Additional copies are available at a charge of £2.50. Issues are published bi-monthly covering the months of Feb/Mar, Apr/May, June/July, Aug/Sept, Oct/Nov and Dec/Jan.

Copies of the Minutes of Parish Council meetings and of *Out of Reach* and *Within Reach* magazines can be found on the village website www.reach-village.co.uk.

The next copy date is 15th March 2019. This magazine is approved and printed by Reach Parish Council.

Our Team

Acting Editor	David Parr
Production	David Parr
Advertising/Treasurer	David Parr
Distribution	Freda Lloyd and Grahame Radford
Photographer	Rosanna Moseley Gore
24Acres	David Thomas
Cookery	Catherine Gibson
Cricket	Ross Clark
Events Team	Debbie Quilter
Family Focus	Tasha Bridgeman
Fen Chitchat	Lesley Boyle
Gardening	Danuta Gibson
IT Advice	David Macmillan
Parish Council	Susan Bailey
Reach Riders Group	Sue Cameron
Rosanna's Ramblings	Rosanna Moseley Gore
Snakehall Farm	Maz Baker
Swaffham Prior School	Helen Bartley
Then and Now	Chris Patterson
Thought for the Day	Krysia Newman
Wicken Fen	Julie Hammond
Wildlife	Joss Goodchild

Playground Update

Even with the weather turning colder, the new playground is still getting plenty of use – there's always someone else there whenever we go to visit! It's great to see it so well used.



The development of the old playground area is still in the funding stages and we are eagerly awaiting the outcome of our current applications. We are in the customer vote for a Bags of Help grant from Tesco. It's a scheme which gives community projects like us grants of up to £4,000 – all raised from the sale of carrier bags in Tesco stores. The public vote in store during January and February on who should receive the awards. Please support us by voting with your blue tokens in the Tesco Newmarket store! Thank you to those who have been already.

Unfortunately, we were unsuccessful in our bid for funding from the Postcode Local Trust – too many good applications and not enough money to go around apparently. But, undeterred, we've submitted an application to the National Lottery Awards for All scheme for £10,000. We should hear the outcome of this application in March – so fingers crossed!!

A recap of our plans for the area: Working with the gardening team at Prospect's Trust, there will be a raised bed along the outside edge of the old playground area, maintaining the restricted access on to the field. We are looking at some seating and a step up on this raised bed so that children can use the bed to grow their own plants. The planting would be a combination of plants to encourage native wildlife, and herbs which could be tended by and used by residents. Anyone with a keen interest in gardening who would like to be involved, please do get in touch – thank you to those who have already! Inside the area created by this raised bed, we plan to install three picnic tables, one with extended ends for wheelchair use, and a concrete table tennis table.

Hopefully by the next issue we will be able to share some good news about funding and the finalised plans and timelines!



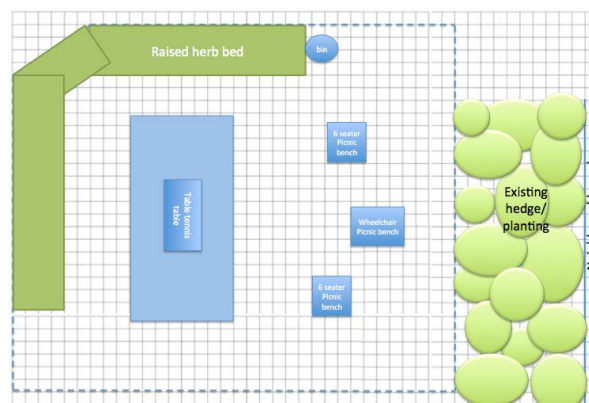
Bags of Help



It's a scheme which gives community projects like us grants of up to £4,000 – all raised from the sale of carrier bags in Tesco stores. The public will now vote in store during January and February 2019 on who should receive the awards. Please support us by voting with your blue tokens in the Tesco Newmarket store!



The funding we receive will go towards the development plans for the old playground area and new benches in the new playground if we get sufficient funding.



Alex de Giorgio-Miller

Play Spaces Officer – Reach Parish Council+
a.degiorgiomiller@reachparishcouncil.org

Burwell Village College Primary

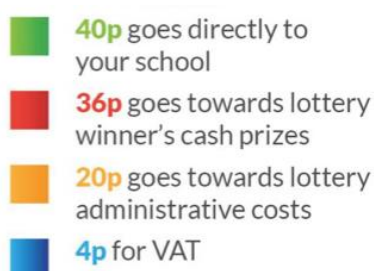
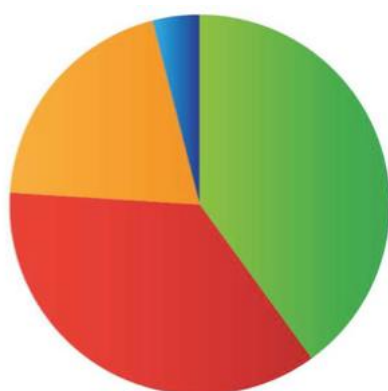
Boost funds for our school – play our new lottery!

The Friends of Burwell Village College Primary have a long history of support for the school, providing all manner of items and events to enrich the lives of our children, including computer equipment, trips and visits and books, books and more books! Partnering with the 'Your School Lottery' organization, the Friends of BVCP have started their own lottery to continue their fundraising!

How it works:

It's simple – choose 6 numbers between 0-9 and if they match the weekly lottery draw, you win great prizes! One of our supporters will win a cash prize every week (30% of ticket sales). Every ticket has a further chance of winning £25,000 each week in a separate national draw!

Tickets cost just £1 per ticket per week and 40% of all ticket sales are donated to our school.



Entry isn't limited to those with a connection to the school - it's a great way to get the whole community involved. And 100 tickets sold means a £30 weekly local cash prize and £2,080 a year for our school!

You can buy tickets online at: www.YourSchoolLottery.co.uk/play or by phone (01865 582 828).

Our first draw is on the 16th February 2019 – sign up now to be in it and support our school!

Neighbourhood Plan

I wanted to notify villagers about the very recent formation of a Group to develop a Neighbourhood Plan for Reach. A Neighbourhood Plan is a way of helping local communities to influence the planning of the area in which they live and work. Among other things it can be used to:



- develop a shared vision for our village
- choose where new homes should be built including the development of affordable housing (affordable housing is housing that is not normally for sale on the open market)
- identify and protect important local green spaces and landscape features that we value
- influence what new buildings should look like
- influence transport and access issues around roads cycling, walking and access for disabled people
- promote renewable energy projects

Whilst a Neighbourhood Plan must be consistent with national planning policy and East Cambridgeshire District Council (ECDC)'s Local Plan, it will give us a much greater say in how the village evolves over the next twenty years and beyond.

More details of our Group and how it will operate will be published in the near future. However, the Group will only succeed if it achieves comprehensive engagement with villagers. We will be using a variety of ways of doing this including public forums, a presence on the village website and updates in this magazine.

In coming months the Group will be seeking your views on the issues that matter most to you as inhabitants of Reach. Our aim is to draw all shades of opinion in the village to ensure that we produce a Plan that can be supported by as many of you as possible.

Initially our key questions will be:

- What do you like most about living in Reach and want to preserve or enhance?
- What do you dislike and want to change?

There is a lot of work to plough through and it is important to be realistic about what we can achieve but, if we are successful in developing a Plan and getting it approved by ECDC then the village will have an opportunity to vote to approve or reject the Plan.

If approved, Reach would have a document that:

- carries statutory weight and must be used by ECDC in determining future planning applications in Reach
- would give us a small degree of ongoing control over planning applications in Reach should the Local Plan come under legal challenge again in the future
- would capture things that matter to us a village but are excluded from the Local Plan which can be quite coarse-grained and focused on bricks and mortar issues
- would capture our aspirations for, say, new cycle routes or bridleways that would give us a much stronger basis for seeking funding to make them happen.

I would, of course, welcome thoughts and offers of help.

Nick Acklam

Chair Reach Neighbourhood Plan Project Group
acklam@reach-village.co.uk
743749

Well done Felicity!



AN AMAZING ACHIEVEMENT

Congratulations go to Felicity Blocksage who has passed her ABRSM GRADE 8 piano exam

Felicity has been studying the piano and theory of music with Hilary Fielding for approximately 12 years. Her dedication and hard work, along with the constant support of Mum, Debbie, has resulted in her success in all the ABRSM exams from Grades one to eight, including Grade 5 theory of music.

Well done Felicity!

New Year's Day Football

While other parishes slumber on the morning of New Year's Day, the athletic and abstemious folk of Reach, by tradition, polish their hobnail boots and turn out for the annual village football match. Anyone rising, bleary-eyed, expecting to witness the beauty of Pele or the peerless craft of Johan Cruyff may wish they had stayed beneath the bedsheets, the spectacle being more reminiscent of the games played in the streets of medieval London between teams of butchers' boys kicking inflated pigs' bladders, games which drove Edward II to instigate a ban on "hustling over large balls from which many evils may arise which God forbids".



This year's contest was classic encounter between les Gilets Jaunes and Les Gilets Bleus – teams which took their names from the vests which Pete Bridgeman kindly lent for the occasion. Could Les Gilets Jaunes triumph like their namesakes on the streets of Paris? The game began with Les Bleus threatening goal on several occasions but producing some memorable misses – planting balls a few inches wide of the post or inexplicably punting them over the bar from a distance of a few feet. But then, suddenly, in they began to pop. Trailing by no goals to four, it seemed to be all over for Les Jaunes when, suddenly, a moment of inspiration from Hector Keutgen produced the best goal of the match, an airy kick from the halfway line which dipped behind the fingers of stranded goalie, Bryan Pearson. It was reminiscent of the goal which brought David Beckham his first flush of fame and brought the game alive once more.

With just minutes to go, Bleus captain Bryan Pearson had had enough of winning easily and declared that the next goal should count for five – and would be a golden goal which finished the match. It was an invitation which Les Bleus could not fail to take up – it was they who seized the initiative and slammed one home to make in 9-1. One could almost hear the cheers from the Elysee Palace as President Macron celebrated the vanquishing of Les Gilets Jaunes.

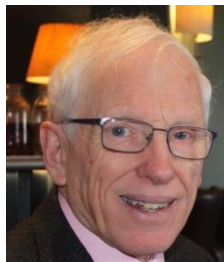
A special mention to avid defender Freddie Bridgeman, and apologies to all the other lads – and lasses – who played with distinction and scored goals. Having shed his camel hair coat to immerse himself 100 percent in the game, the reporter from Within Reach failed to take the names of the scorers – or even to remember much of what happened. Next year, however, it would be nice to have some players from that all-important age group 18-49 who were noticeably absent from this game.

Ross Clark

IT Advice

Hello Again. My topic in this issue and the next one is buying a new computer and/or tablet. There is a tremendous choice of devices and specifications which can be very confusing to the buyer:

Tablets
Convertibles
Chromebooks
Laptops
All-in-Ones
Desktops
Refurbished



These definitions often blend at the cross-over points, one into another.

Tablets:

These are very popular with people that want to email, browse the internet, read e-books and magazines, shop and look at photographs and videos. Tablets are easy to use, especially iPads, as they have a simple, intuitive interface which is shared with the iPhone, so it is familiar to many and means that information and photos are easy to share with iCloud. They are portable which makes them good for travelling and commuting or using in different rooms of the house. Small screens (about 7 inch) increase portability but limit usefulness and often don't offer much advantage compared with larger Smartphones. Larger screens reduce portability and increase weight. Add-on keyboards are available and often double as a screen cover, meaning that a larger screen leads to a larger keyboard, but iPads do not support Mouse control. Android supports a Mouse, but some apps do not adapt well to a larger screen.

Amazon's Fire tablets are very good value for money, but do not have the range of apps and do not connect to Bluetooth keyboards, especially important if you want to do some occasional work like word processing. Because the weight is in the tablet, rather than the keyboard, it is much easier to use a keyboard on a table than on your lap. Tablets work best when connected to the internet, so if you intend to be out and about a lot it may be advisable to get one that can be connected to the Cell Phone network. These days even cheap printers often have the facility to print directly from Apple or Android devices which makes things easier.

Convertibles:

Also known as 'Two in Ones' these are a half-way house between tablets and laptops. Some have detachable keyboards which often house more USB and screen connections and an additional battery allowing longer usage when unplugged, otherwise the keyboard folds behind the screen and can be used as a stand for looking at films and photos and for presentations (see illustration).



Unlike many laptops they have touch screens so that they can be used without a keyboard. They are available with Windows 10 or Android or it's big brother Chrome OS (more of this in the laptop section). Apple do not have an entry in this category. Using Windows is familiar to many people and makes multi-tasking and split screens easy. Convertibles are a compromise so tend to be heavier and bulkier than a tablet but are still very portable. The more expensive versions run Windows 10 which helps with multi-tasking e.g. for doing office work at home or on the road. Some of the cheap versions have very limited storage built in which makes updating difficult. I could not recommend a Windows 10 machine with less than 64Gb of primary storage even though most of these machines allow the use of an SD memory card.

Next Issue I will cover Laptops, All-in-Ones and desktops and will advise on buying refurbished computers.

David McMillan
741259

Burwell and Reach Car Scheme



If you are unable to use conventional transport, the scheme can help you to travel from Burwell or Reach to Doctors, Dentists, Chiropodists, Opticians, Village Shopping or Visits to Friends/Relatives at home or in hospital

Transport cannot be provided for Hospital Outpatient Appointments

Contact Hours are 8.30am to 5.00pm, Monday to Friday – please give us 48 hours' notice

01638 742543 (answerphone) and you will be contacted after you have left your request for transport

24Acres Community Orchard

Pruning

On Sunday 20th January, a small group of us (Andrew Trump, Graham Lingley, Danuta and Richard Gibson and myself) spent a beautiful frosty, sunny morning pruning the apple and pear trees on the 24 Acres community orchard.



You may have wondered why we bother to prune fruit trees. After all, trees left untended will usually grow perfectly well – won't they? Well here are the main reasons why we take up our saws and secateurs and go to the effort of pruning every winter.

Directing the trees energy

If trees were left to grow without intervention, 'as nature intended', they would grow to reproduce themselves in as large a quantity as possible. But then it is left to chance whether you end up with the best shaped tree (in which fruit can be easily picked) or the best quality fruit (we would usually prefer fewer, larger fruits than a tree might produce untended).

Shaping young trees

Young trees (the stage that ours are still at in the 24 Acres orchard) need to be pruned to create a strong framework, capable of bearing the weight of a heavy crop of fruit, on branches that are accessible. In the 24 Acres orchard we are trying to create a 'goblet' shape for each tree.



Andrew Trump

Light and air

Pruning overcrowded branches allows sunlight to penetrate, encouraging large healthy leaves and buds increasing the quality of fruit and allowing it to ripen and colour in the sun. It also allows air to circulate, removing moisture and reducing the risk of fungal infections.

Removing badly positioned branches

If branches are touching or crossing one another they can rub and become damaged. This can weaken the branch mechanically or provide an entry for infection.



Graham Lingley

Pests and disease control

Pruning out wood that is damaged or heavily infected with scab, mildew, canker or silver leaf helps to reduce the chance of other trees becoming infected.

Balancing growth and fruit production

Fruit grows best on wood that is 2-5 years old. But unpruned trees will produce large crops at the expense of new growth. Over time fruit quality will deteriorate as it is produced on this old, fruiting wood. Pruning stimulates new vegetative growth (future fruiting wood).



Danuta and Richard Gibson

Reducing the risk of storm damage

In older trees, the crown can become dense and increase the risk of damage by strong winds. Pruning to restrict the density, height or spread of the crown will help prevent this.

David Thomas

Swaffham Prior School



A new year, a new term, a new start!

When we returned to school in January we talked at length about self-improvement and in particular – resolutions. But I was told by Reverend Eleanor that unfortunately 'Quitter's Day' is January 12th (as I know only too well!!) so I investigated a little more and found that 80% of people give up by February and only 8% achieve their goals they made at the start of the year!

Not ideal statistics so it made me think again about what messages we give our children. Instead of saying the only time to make a change is January, we encourage children every single day to think about the type of goals they want to achieve and the type of person they want to be. We try to instil in our pupils that we all make mistakes and that not every journey is straight and smooth and that there will be setbacks and challenges. Ultimately, the key to achieving goals is how they overcome the setbacks, and how they grow into young people who have the strength of character to know that every day is a new start and a new opportunity.

Recently I had the pleasure of escorting four Year 4 children from Swaffham Prior School to a Maths Challenge at St. Faith's School in Cambridge. 120 pupils from all over Cambridgeshire were gathered together to solve a range of maths questions and puzzles. As I watched them participate, I was struck by how these pupils, aged 8 and 9, really epitomised the skills and qualities that support great learning. Working in pairs, heads down, collaborating over how to solve some pretty difficult maths, they demonstrated resilience, tenacity, determination and deep concentration. I was extremely proud of all the children who took part.

We will shortly be welcoming Dr Fretwell who will be talking to the pupils in assembly about his experiences in the Antarctic and it made me think about the wonderfully diverse community we have. This term KS2 are learning about World War Two and I was wondering if there are members of the community who would be willing to come into school to share their knowledge, or indeed their experiences of this period in our recent history. Visitors really do engage and enrich the children's school experience so we welcome you with open arms – please do get in touch if you are able to give up some time to share with the children about this or any topic that may be of interest to them.

Helen Bartley

head@swaffhamprior.cambs.sch.uk

Reach Riders



On Sunday 30th December nearly 20 horses, ponies and their riders joined the Reach Riders Group for a festive ride to No Hurry pub in Upware. We had Riders from Reach, Upware, Swaffham Prior and Burwell.



A few festive sausage rolls, biscuits and mince pies washed down with some warming port were provided before the group set off. They all arrived safe and sound at the pub, taking a route by the lode, kindly marked out and tested by Claire and Jodie Halpin. After a refreshing drink and some rest they all headed back.

We were lucky with the weather and everyone seemed to have a great time. Thank go to those who provided the food and drink and to help organise. I am sure we'll be organising another ride soon, hopefully in the Spring.

In the meantime, if anyone wants to join the group and have access to the field with both show jumps and crosscountry jumps, just contact me at:
ewenandsue@btinternet.com

Or download the membership forms from the village website or Facebook page

Happy New Year from the Reach Riders Group

Sue Cameron



Events Team

As I sit here thinking about the year ahead, I must first reflect on the last one. It's easy to forget, but we have had some lovely events in Reach during 2018. The playground opening, the Royal Wedding tea party, apple pressing, the 100 years since the Armistice and not to mention the many events leading up to Christmas.

We really must thank all those involved especially when putting up and taking down tents on Christmas Eve, when the rest of us are settling down to enjoy the festivities. As a team we are trying to keep our focus on village events that encourage the wonderful community spirit we have here in Reach.

The team's aims are:

- To organise village events
- To support villagers who have ideas for other events make them happen
- To keep a list of the village events on the website, so everyone knows what is going to happen and when.

The Year Ahead

Many of the events below rely on villagers owning the event and making it happen. Please do let us know if you can help or even have another event you would like to host. We miss Hugh and Marie who used to faithfully host Curry night and wine tasting!

1. **Family Bingo Night**
organised with the mini events team Saturday 23rd February
2. **Reach Fair**
Monday 6th May
3. **Macmillan Coffee Morning**
Saturday 28th September
4. **Harvest Supper**
October (date to be advised)
5. **Halloween**
Thursday 31st October
6. **Christmas Tree Lights Switch-on**
Sunday 1st December
7. **Seniors Christmas Lunch**
11th December
8. **Christingle Service**
December (date to be advised)
9. **Carols around the Christmas Tree**
Tuesday 24th December

Just some comments on two events in December 2018:

Firstly, the **Seniors Christmas Lunch** (see cover photo). It was lovely, wonderful to see everyone enjoying themselves so much. Huge thanks go to everyone who helped out with special thanks going to Catherine Gibson, Claire Acklam and Ian Reinhardt who produced superb food for everyone to enjoy. And thanks also go to Graham Radford who hosted the Bingo.

Those dubious about Bingo suddenly became fiercely competitive – surely nothing to do with the Sauvignon Blanc?



Maybe it was the magnificent prizes on offer?



And the **Christingle Service** in the Church was outstanding – and its not just for the children . . .



See the village website for details on all our 2019 events:
<http://www.reach-village.co.uk/news.html>

Email: reacheventsteam@btinternet.com
Find us on Facebook too!

Debbie Quilter

Rosanna's Ramblings

I'm writing this on Sunday 13 January and of late I have been much preoccupied with Light – or rather Lack Of Light. It is of course one of the natural hazards of winter and one simply has to be philosophical about it and grateful, if one happens to be a sufferer from Seasonal Affective Disorder (which I don't consider myself to be), that we don't live in the far north.



My daughter, who is currently living in Copenhagen, is having gloomy weather with sunrise at 8.32 and sunset at 16.06 at the moment (compared to Reach's 8.03 and 16.12 today), but Tromso inside the Arctic Circle – the wonderful location for our successful trip last February to see the Northern Lights – doesn't even register yet as having ANY sunrise or sunset until 15 January when it gets a magnificent 34 minutes of dusky daylight!



My weather app calls it the Polar Night, which is a wonderfully evocative term for something that, while conjuring up images of Scandinavian “hygge” – candles, cosy jumpers, warm drinks or mulled glogg, cinnamon buns, while outside the wind howls in the darkness and the lights dance in the sky – in reality gives the far north a reputation for an unenviably high rate of depression and suicide. That may not actually be statistically accurate and all statistics are prone to biased interpretation, but still, there is something that rings true about the ‘down-ness’ of darkness and the ‘up-ness’ of light.

We were up in Cumbria last weekend, and while the landscape of fell and beck and wind-sculpted bare trees was as gorgeous as ever, it wasn't quite as uplifting as when the sun comes out and one is rewarded with a distant glimpse of illuminated Lake District peaks.

But it was on the drive back down south last Sunday, first on that long and tedious stretch of the A1 through Lincolnshire and Nottinghamshire (where the landscape dullness makes me yearn for real hills, or real Fenland skies) and then on the joy-of-joys-40mph-limit endlessness of the A14 that I began to detect a significant problem in myself.



You see, there was an unbroken infinity of the grey grey underbelly of blanketing stratus clouds – maybe for 50 miles at least. And that featureless underbelly felt like it was so low that it scarcely skimmed the crowns of the trees – well, those left by the carnage of the ‘improvements’ on “Your A14”, as they like to call it (to give us a happy and friendly sense of ownership, or stakeholdership, of gratitude for their thoughtfulness in helping us in this wonderfully helpful way – sorry – too cynical? I apologise ...). And by the time we'd turned off at Quy and were heading back towards home, I felt so overwhelmed by the sheer bleakness of everything that arriving back at a chilly unheated house at 2pm just felt like one more kick in the teeth.



I did feel ungrateful to be so grumpy and grumbly, I really did. We had the means to warm the house up. We could boil a kettle, get some warm food on the go, turn the lights on, get a cheerful fire burning in the grate. Many don't and Charles spends evenings in the winter working with the Cambridge Churches Homeless Project cooking for men who, even if they are employed sometimes, simply can't get out of the trap of no address, no permanent work, no vehicle, no escape. But there is something so viscerally dispiriting about the lack of light in the sky that despite feeling ungrateful, I still felt it. And today, when driving back from Cambridge, again with the sky grey and dull, my heart did a little leap of excitement when I spotted, low on the horizon to the southwest as we passed through the edge of Swaffham Prior, an almost magnesium-flare brightness. It didn't last long, but it felt like a harbinger of hope.



And, as I say, I don't suffer from SAD. I really don't. I don't hover under 'daylight bulbs' all winter, I don't complain about bad winter weather, I hated hated hated the endless sunshine and heat of last summer.

So what's been going on with me, I ask myself?

Well, I suspect it's something to do with the cluster of anniversaries of deaths and funerals of close loved ones – 21 December, 6 January, 9 January, 13 January (ah, 35 years ago, my darling Russian grandmother, 1892-1984). It's something to do with feeling very tired indeed after a four week virus in December that made talkative me lose my voice (Charles did so enjoy the quiet, so he said). It's something to do with finally finishing, yesterday, my acupuncture practice in Northamptonshire and having to say goodbye to patients I have supported and loved for decades. And yes, that was to do with finally cutting the ties to an old life, more fully to embrace this happier Cambridgeshire life – but it was still really sad.

And it's something to do with the turning of another year and that familiar feeling for anyone over the age of 50 of time galloping simply ridiculously fast. I know we're all hurtling towards our ends, just as our planet is hurtling through space – most of the time we're really not aware of the speed, but sometimes the roar of the wind rushing past our ears becomes deafening and I guess, for me, this is one such time.



Oh, and missing Hector. Just short of six months and we miss the darling dog more, really, as the unreal reality slowly sinks in that he really isn't 'just in the next room', and that the tapping heard downstairs when the heating comes on in the morning isn't his black Labrador tail beating a message of morning greeting to us. Unless, of course, there's something more mysterious going on, which can at times of sadness be a comforting thought.

So, let's raise a thoughtful glass to the certain knowledge that by the time this magazine arrives in our homes, the Reach sunrise will be about 20 minutes earlier than today as I write this, and the sunset about 30 minutes later. That's 50 minutes of extra daylight. But please ... could we just have some sunshine with it too?



Rosanna Moseley Gore



Bottisham and Burwell Photographic Club



As we continue our meetings following the Christmas and New Year holidays, our club goes from strength to strength with new members joining us, which is extremely encouraging. Photography is a very popular hobby, with more and more people snapping selfies and photographs on their Cameras, iPads and iPhones.

Professional landscape photographer Justin Minns from Stowmarket will be visiting us on the 12th February to give a digital presentation entitled 'A Learning Curve'. The following week our member, Ian Kippax, will give us a demonstration on how to take better pictures with the Adobe program 'Lightroom' – the Basics and Techniques. Ian is taking part in what we call a "Members Mini's" evening when the more experienced members of the club share their ideas and expertise.

In March we are looking forward to an evening with Mrs Andrea Hargreaves from Selby, North Yorkshire. Andrea has recently gained the highest award in amateur photography by gaining Master of The Photographic Alliance of Gt. Britain (MPAGB). She will show us the prints entered for the award, together with a selection of her excellent photography.

Not only do we have internal print and projected digital image competitions, but our club also takes part in external competitions throughout East Anglia. In January with 35 other clubs in the Cambridge Inter-Club Digital Competition, in February the St Ives Inter-print Competition and the EAF PDI Competition, and in March the EAF Print Competition. We take our entries very seriously and so far the club has fared very well against some of the 'big boys' in the East Anglian area.

We have lots more in store during our programme so why not give us a visit. We meet every Tuesday evening at Lode Chapel from 7.30 pm to 9.30 pm and new members are always welcome. Visitors are also welcome for a small entrance fee of £3.00. Further details can be obtained from the Secretary, Mrs Daphne Hanson, Tele: 01638 741106 or Email: hanson16@virginmedia.com.

I look forward to meeting you!!!

Daphne Hanson
Hon Secretary

Burwell Museum



A Huge Thank You...

To everyone who volunteered at the museum last year – over 4,500 hours were worked by 60 people, including 17 people who clocked up more than 100 hours each! We'd also like to thank Burwell Village College and all the community groups who took part in our Mill for All Seasons project and helped us to exceed our targets. And, of course, we are very grateful to everyone who has supported us by buying season tickets, visiting the museum and telling other people about us. If you would like to volunteer for us in 2019, please get in touch at volunteers@burwellmuseum.org.uk. During the winter we particularly need people to help us to look after our site and buildings – if you have any free time during the day on a Tuesday and can wield a paintbrush or a screwdriver then we'd love to hear from you.

Another Huge Thank You...

To everyone at the Co-op in Burwell, who raised over £4,000 for us as one of their community causes this year. They've been absolutely fantastic and definitely went above and beyond the cause of duty to support us at events and help us out with publicity over a very successful year. We're using the money to build a better path to the windmill from the street, so that people can get to us more easily. We're really hoping it will be in place by the start of the season, but we're still at the very early stages so we don't want to make too many promises. We'll let everyone know when it's ready!

Opening Weekend and Easter Egg Hunt

The museum re-opens at Easter weekend, Sunday 21st April and Bank Holiday Monday 22nd April 2019 for our annual Easter Egg Hunt. Loads of family fun including chocolate prizes for all egg hunters, crafts, tombola and Easter treats in the tea room! Standard museum admission applies, season ticket holders and under 3s are free. Egg hunt entry is £1.

The museum will then be open every Thursday, Sunday and Bank Holiday Monday from Easter to October, 11.00-5.00. Last entry at 4.00.

Web: www.burwellmuseum.org.uk
Email: museum@burwellmuseum.org.uk
Tel: 01638 605544

Address:

Burwell Museum
Mill Close, Burwell CB25 0HL

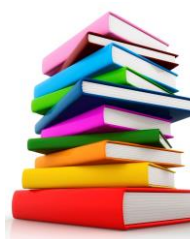
Burwell Museum Coach Trips



- **Peterborough**
Fri 15th March - tickets £15
- **Langham Glass and Holt**
Wed 10th April - tickets £23
- **Clacton**
Thurs 6th June - tickets £20
- **Cromer Pier Show**
Wed 17th July - tickets £40
- **Southend**
Tues 13th August - tickets £20
- **Sheringham 40s Day**
15th Sept - tickets £19

Tickets on sale at Tina's North St Burwell or ring Barbara on 01638741581 or 07887712296.

Snakehall Farm would like to offer a more attractive range of books and would appreciate any donations – ideally anything you would be prepared to pay between £1.00 and £5.00 for.



A bookcase would also be appreciated.

If you are unable to deliver these to Snakehall Farm then I can collect them – just call me on 07785 958857.

Mike Malster

Cambridgeshire Fire and Rescue Service



CAMBRIDGESHIRE
FIRE & RESCUE SERVICE
pressoffice@cambsfire.gov.uk
www.cambsfire.gov.uk

PREVENTING PROTECTING RESPONDING

Register your Appliances

Cambridgeshire Fire and Rescue Service is encouraging residents to register their appliances for a safer 2019. All you have to do is visit registermyappliance.org.uk and register large appliances bought in the last 12 years.

Registering appliances improves safety as it ensures that householders can be contacted swiftly if a safety repair is ever needed or if an item is recalled by the manufacturer.

As an incentive to encourage owners to register their appliances, many of the leading brands on registermyappliance.org.uk are offering to enter registrants into free draws for a range of desirable prizes. Appliances being registered don't have to be in warranty, or brand new to be applicable.

Get the call - become an on-call firefighter

Cambridgeshire Fire and Rescue Service is looking to recruit more on-call firefighters to help serve local communities across the county. CFRS is looking for men and women from all backgrounds to become on-call firefighters and provide emergency cover from either their home or their workplace.

On-call firefighters are a vital part of our Service and community. They respond to a wide range of incidents, from fighting fires, attending road traffic collisions, animal rescues to supporting other emergency services. In addition to responding to emergency incidents, our on-call firefighters support their communities by providing information and advice on a range of community safety topics.

They receive an annual wage to reflect the time they commit to being available plus additional payments for attending incidents and drill nights (one evening a week for two hours). It's a hugely rewarding role, and we hope to encourage members of the community from all backgrounds to get in touch and find out more about becoming an on-call firefighter.

To find out more about becoming an on-call firefighter and to get in touch with your local fire and rescue service visit: www.oncallfire.uk.

To find your local station please visit:
<http://www.cambsfire.gov.uk/find-a-fire-station-393.aspx>

Out and About Winter 2019

When talking to our neighbour, Anita Folkes, recently I learnt a few things. Firstly, that both her father and grandfather were shepherds at different farms in Swaffham Prior. At lambing time her father left the family home for three weeks and lived in a hut, the better to tend his flock.



Her mother walked across the fields carrying meals, waited whilst he ate and returned home with the empty plates.

Secondly, she did not recognise the area of land often referred to in my magazine articles as Tubney Fen and felt others (say, those new to the village) may be just as mystified.

It is located just outside Reach, travel down Great Lane to Little Fen Drove, (the bumpy single-track lane that joins Great Drove and on to Upware), keep Swan Lake barns on your left and continue for approx. quarter of a mile to a set of gates on the right with a small area of parking. This is Tubney Fen, so named after its benefactor. It has a mere (behind a grassy bank) full of wildfowl, a lovely bird hide, walks, track and handy mounting blocks for horse riders, picnic table, a reed-filled waterway. Conservation grazing is undertaken by cattle, seasonally. Dogs must be kept under control, rare red-list birds reside here i.e. the ground-nesting skylark (April to August) and lapwing (March to June).

Ron noted a first show of snowdrops on Boxing Day in the drifts bordering Fitzroy Farm and the track to Reach Wood.



Known as The Star of Hope these dainty flowers became a symbol of salvation to desperate British soldiers fighting in the Crimean War. Demoralised, cold, hungry and ill equipped to survive the bitter winter conditions, those fighting witnessed the bare earth come alive with flowers, restoring their flagging spirits.

I haven't walked decent distances in a long time, winter being the time to retreat a little from the world, to hibernate. It has been unseasonably mild but I feel the foreboding grey days and waterlogged skies warn of colder, harsher weather to come.

Attractive mustard-coloured lichen can be seen on Reach Wood trees. Lichens are not plants, they do not have roots that absorb water and nutrients, they are a partnership between a fungus and an alga. I read that some lichens are considered to be amongst the oldest living things.



A barn owl hunts the edges of Reach Wood late afternoons and mornings, I time its daily passing at 9.08am. Many blackbirds populate Great Lane (Little Barn area) as dusk falls, we counted 14 one early evening, their dark ground shapes over-excite the dog. Greenfinches inhabit Aves's hedge, they can often be found close to farmland. Flocks of yellow hammer and long tailed tits are there too.

I stood beside Reach Lode for ages recently, hoping to discover which creature made a just-audible plop in the water. At best I thought (hoped) it could have been the rare water vole, but then common sense prevailed for it is now the most endangered mammal in the UK. Eventually an elegant, extremely shy female mallard poked her camouflaged head from the overgrowth.

I read an article in the January FT Weekend Magazine about Stephen Gill, who drove a solitary pillar into an open field near his home in Sweden and set up a camera nearby. He was astounded at the huge variety of birds the pillar drew from Sweden's deceptively empty skies. If I had a farm I would do just this.

Instead, I settle for the fenceposts in our paddock (neighbouring Reach Wood), this week a barn owl, green woodpecker and buzzard settled on one or the other of them.

I rue the fact that additional fencing has over-sectioned our previously open and airy paddock. An unfortunate necessity, the new rescue pony has unwittingly disrupted the tranquil dynamics of the stableyard and electric rope entanglements, accidents and vet bills forced a change.

Villager sightings:

Penny & Ron:

We have a spotted woodpecker visiting our bird feeders daily and an opportunistic pheasant who spends most of his day sitting under them. Joe the crow is a permanent fixture, we think he has been here about 4 years now.

We have a raptor in the owl box at the top of the end wall of our barn. Fresh pellets are evident every day and we think it is a kestrel but haven't actually seen it yet!

A sparrowhawk is being a nuisance to us as we love feeding the song birds. He killed a pigeon yesterday (many feathers on the lawn) so size is not an issue with him/her.

And what a treat it was to show my London-based sister a skein of geese passing over in Saturday's dusk making a lot of noise. She sees more foxes than we do though - usually walking across the roof of their garden shed. They love them, we live in fear for our chickens!

A roe deer crosses the field next to us every day - a beautiful sight.



Buzzard on our paddock fencepost

Nick Acklam:

18 November: A male whinchat (below) a late straggler as these are summer visitors, tracks us flitting from shrub to shrub as we walk along the far edge of Tubney Fen.



24 November: A juvenile Dunlin on the near part of Tubney Fen close to the willow avenue.

25 November: The glorious sight of ten or so swans flying in to the washes at Upware. The early morning sun illuminates them against a steely sky.

27 November: A Sparrowhawk pursues a flock of Redwing through the big hedge that separates Straight Drove from the Pocket Park. It is unsuccessful on this occasion but very large flocks of Redwing and Fieldfare are currently feeding on the haws in this hedge. On 10 December a bloodied pile of feathers on Straight Drove suggests a raptor had successfully taken advantage of this target-rich environment.

9 December: Two Cormorants take off from the catchwater drain by the Hythe.

13 December: Separate sightings of two Barn Owls hunting along the banks of Reach Lode in the twilight. One has distinctive very pale plumage that seems grey rather than beige in tone.

14 December: A Kingfisher flies low, straight and purposefully down the catchwater drain by the Hythe, offering the longest sighting I have ever had. It is a staggering, almost shocking, dot of metallic turquoise in the gloom - almost alien in its intensity.

18 December: Twenty Lapwings over Tubney, noteworthy because of the presence in the flight of a similar number of another smaller bird, which I am unable to identify. Lapwings are known to associate with Black Headed Gulls and Golden Plovers but, on this occasion, it was neither of these species.

20 December and 8 January: First sightings of Roe Deer on the land around Tubney Fen and the 24 Acres respectively for several months. My experience suggests Roe Deer numbers are markedly reduced from last year with culling or poaching the likely cause.

22 December: A Marsh Harrier hunts across Tubney Mere. A buzzard comes into view offering a fascinating contrast in styles and shapes. The harrier is an altogether more elegant and less laboured flier.

28 December, 31 December and 6 January: Sightings of Common Cranes on Tubney Fen - the first for several years although they are spotted fairly frequently on Burwell Fen.

30 December: A male Stonechat perches atop shrubs on Straight Drove.

5 and 9 January: Large flocks of Lapwing, numbering up to 100 birds, present on Tubney Fen. On the first occasion the birds take off and swarm in a way that reminds me of a Starling murmuration before moving off towards Burwell Fen.

8 January: A wonderful sunset over Burwell Mere, lighting up the reeds and adding a splash of magic to the Black Headed Gulls, Teal and Shoveller that are present in large numbers.



17 January on a pre-dawn walk with the dog, an otter bounces across Straight Drove from the scrub around the third of the three ponds into a ditch leading into Tubney Fen and disappears. Quite unmistakable shape and gait and very exciting.

Joss Goodchild
jossbmg@icloud.com

Swaffham Prior Gardeners

Indoor meetings are on a Tuesday at 8pm in Swaffham Prior Village Hall. Membership is £15 per person. Visitors are always welcome: £3 per evening.

Chairman: Peter Hart 01638 741681
Treasurer: Maggie Haverson
Secretaries: Margaret Joyce and Mary Hart 741681

Wicken Fen and Anglesey Abbey

There's still an abundance of winter wildlife to see at Wicken Fen. Our Countryside Manager, Martin Lester, has been enjoying the sounds of corvids on the fen; the corvid family includes crows, jackdaws, rooks, magpies and jays. Martin recommends a walk along Monk's Lode to hear the chattering of jackdaws and rooks. There are around 1,000 of them at the moment and they come in to roost on St Edmund's Fen almost immediately before dark. It's a spectacular sight and sound!



Visitors are enjoying seeing the magnificent hen harriers as they overwinter here at Wicken Fen. If you can visit in the afternoon as the sun starts to set, head for the Visitor Centre, Boardwalk hide, or our new viewing platform to look out for hen harriers quartering over the fen, looking for a safe place to roost. Our friendly team will be happy to point you in the right direction.

It's the time of year when we start planning for the new season ahead and looking for new volunteers to help us at Wicken Fen. If you have some spare time and would like to join our friendly team, we currently have some interesting volunteer opportunities available. If you'd like to find out a little more about volunteering, please contact our Volunteer Manager, Peter Green, email: peter.green@nationaltrust.org.uk.

Join us for some fun family events for half-term including **Wintry Wild Art** on Tuesday 19 February and **Go Wild: Winter Outdoor Survival** on Thursday 21 February. We'll also be offering 'Wild Weather' activities in the Family Discovery Area of the Visitor Centre. Winter weather can be unpredictable, but we've got ideas to help families enjoy being outside whatever the weather. Our **Mucky Pups** sessions for under 5s are 'Feathery February' (on 13 and 14 February) and 'Muddy March' (13 and 14 March); join us for outdoor fun, craft and adventure!

We've got some great adult events to get you outdoors or learning something new. Our annual **World Wetlands Day Walk** for adults is on Sunday 3 February. We're introducing creative writing workshops exploring fenland themes, the first of which, **Writing the Fens**, is on Saturday 9 March. Those interested in art might like to try our **Painting the Fens** watercolours workshop on Saturday 30 March. Our final event celebrates Mother's Day on Sunday 31 March, when we'll be offering our popular **Mothering Sunday Boat Trips** with a cream tea. Full details of all events and booking arrangements are available in the 'What's On' section of the Wicken website at www.nationaltrust.org.uk/wicken-fen.

Julia Hammond

What's Growing on at Snakehall Farm?



Why not unleash your inner vegan this January???

Why don't you come by and look at the healthy produce we have in our farm shop? From a selection of squashes, ideal for those warming winter soups to our kale, beetroot, garlic, herbs and sprouts. We also have some lovely chutneys that would go nicely with any leftover Christmas cheeses.



A big shout out to Lee VWCLub Britton, our own Farm Support worker Stuart Bloom and their VW crew for their festive Tools For Tilly Charity Run. They raised an amazing £400, a positive start to what looks like a great year ahead!



Look out for other ways you can help support us and our celebratory plans in our February and March Newsletters.

A big thank you to the Waitrose Newmarket shoppers, who supported us by using the Green tokens in the Community Matters Scheme when they shopped and we raised a whopping £300.

Two of our Snakehall Team are going to be slipping on their running shoes to pound the pavements of Cambridge in the Cambridge Half Marathon.



Please support Anna from the Garden Team and Linda from the Farm Team by following the link.
<https://localgiving.org/fundraising/RunAnnaRunLinda/>

Good Luck Ladies!!

Maz Baker

01638 741551

The Dyke's End

Spring is in the air and nature is starting to blossom, albeit slowly, but there are certainly some blooms on the blackthorn (sloes) in sheltered parts.

So here at The Dyke's End, we are celebrating Valentines with a 3 day Valentines Special Menu (see right) for all those who wish to say "I Love You", or just make someone close feel special. It will run from Thursday 14th February to Saturday 16th February, so it gives everyone chance to enjoy our menu of delights and not get left out.

We have been recognised as a "go to place" for all of those who enjoy our fish dishes and together with our homemade desserts, are becoming legendary.

We look forward to welcoming you to the Dyke's End.

Frances

Neighbourhood Watch

Recent figures for Cambridgeshire show that if you are part of Neighbourhood Watch your risk of being burgled is reduced to 1/8th of what it would have been – that is down to 1/8th, and not by 1/8th. However, it needs to be obvious that Neighbourhood Watch exists and this is achieved by the means of window stickers and street signs. Although the window stickers are a free issue, the street signs that are usually placed on lampposts are £15 each.

Most people are aware that Neighbourhood Watch is there to reduce crime and antisocial behaviour, but there are two other aspects to it. In Neighbourhood Watch we try to bring in an element of care within the community. We are not meals-on-wheels or amateur nurses but should be able to do the occasional bit of shopping or put the wheelie bin out for someone who is unable to do so.

We are also about building communities. This was not part of our original purpose, years ago you did not have to ask people to talk to their neighbours, it was all part of the society in which we lived. Sadly, this is no longer the case, and even in small compact villages it is not unusual to find that many residents know very few of their neighbours by name. People feel more at home in their community if they know the folks around them.

It is thought that everyone in Reach is within a Neighbourhood Watch scheme, if you are not, or are not sure, just contact me. If you would like to know more about neighbourhood watch, do contact me.

Kevin Evans

Secretary, East Cambridgeshire Neighbourhood Watch

Tel: 01353 614892

Email: kevin.g.evans@ntlworld.com

Valentine's Dinner Menu

Thurs 14th, Fri 15th and Sat 16th

A glass of Prosecco upon arrival

First Courses

Charcuterie, olive and feta platter with crusty bread - to share
Baked camembert and crudities with crusty bread – to share
Roasted red pepper and tomato soup with a basil butter crouton and granary roll
Scallop and prawn gratin with a dressed salad and granary roll
Smoked salmon and crayfish parcels with a dressed salad and granary roll

Lemon Sorbet

Main Courses

Wild venison cassoulet with parmentier potatoes
Mixed fish grill with a dressed salad garnish and fries
Slow braised lamb shank with creamy mash and seasonal vegetables
Trio of pork - fillet, bacon croquet and black pudding with palmier potatoes and seasonal vegetables
Mediterranean vegetable tart with a goats' cheese topping served with a dressed salad

Puddings

Salted caramel brownie
Strawberry cheesecake with chantilly cream or vanilla bean ice cream
Fruit platter with honeycomb with chocolate sauce and chantilly cream or vanilla bean ice cream
Trio of deluxe ice creams
A selection of cheese and biscuits

Coffee and Chocolates

£27.50 per person

Spring Jumble Sale

Saturday 9th March 2019 - from 2-4pm

St. James' Church, High Street, Lode, CB25 9EH

There is a car park opposite the church.

The entrance fee is £1 for adults and free for children

Tea, coffee, soft drinks and cakes are available - we look forward to seeing you.

Some of the proceeds of the sale will be used to offset expenses for the pop up picnic. The date for this is August 26th bank holiday Monday, so hopefully see you then too.

Family Focus

Wow - how is it February already? Time is truly flying by. People always tell you as you grow up that time seems to go faster the older you get and now I believe them!

The time between November and March is always really busy for us as a family, not only with Christmas but a bunch of birthdays too so I can't see time slowing down any time soon!



At the moment Lacey, who is four, doesn't believe we've had Christmas because it didn't snow! I don't know how she will take it if we don't get a good amount this year at all. Between Christmas and two of the girls' birthdays our house resembles a cross between Hamleys toy store and a jumble sale so my main plan for the next few weeks is going to be going through the house room by room and having a clear out and declutter. I find the Facebook selling pages really helpful for this and for bigger items I turn to Ebay. I'm trying to think really hard about what we buy and not just buy things for the sake of it. If we are finished with something I try to find a way it can be reused or passed onto someone it can be used by, one person's rubbish is another person's treasure.

Between all the clearing out and numerous taxi jobs I undertake in a week as mums taxi service I'm sure we will be able to squeeze in a few trips out. One trip I have put on the list is to visit Burwash Manor. I have been once before a few years ago to a Christmas event they held to visit the Reindeer and have always meant to go back. Its website states it is the place "Where retail meets the countryside". I hope to go and have a look around the shops and having a coffee in the Cafe before taking the girls to the play area. Then onto the farm which is run by the same family that have run it for the last 100 years. The shops and cafe are open 7 days a week as is the farm although some of the walks around the farm differ depending on the time of year. More information can be found at www.burwashmanor.com and www.burwashmanorfarm.com.

Another trip we hope to be able to make this year is to the new ice skating rink in Cambridge which had originally planned to open last year but after a couple of setbacks was pushed back to a 2019 opening. Lucy especially is keen on this trip and has been ever since we heard of it being built, Im not sure how keen Nathan will be after our most recent trip to the temporary rink which is put up in December on Parkers Piece after which we both sat in rather soggy trousers through dinner, let's just say more practice is needed

Tasha Bridgeman



Bottisham Village College

Adult Learning

Are you interested in learning something new in 2019? Our full range of courses is available on our website:

www.bottishamvc.org/adultlearning

Courses include:

Art & Artists (morning)

Calligraphy (afternoon)

Creating Glass Jewellery

Cookery: Italian Meat Dishes, Breads & Focaccia;

Traditional Home Baking;

Chocolate Galore; Curry House Favourites;

Digital Photography: Night Shots & Winter;

People & Motion Floristry:

Spring Flowers for the Home

Knitting: Learn the Basics

Making the Most of Your Garden (Horticulture)

Understanding Modern Art

(the above are evening courses unless specified otherwise)

Saturday Workshops include:

Affordable Floral Wedding Tables & Pew Ends

Cook with your Kids

Creative Writing – Short Stories

Dichloric Glass Jewellery

Get to Know your Ipad/Tablet

Indian Fast Foods (Cookery)

Make-Up: Fabulous Over 40s

Printing without a Press

Tai Chi Workshop

www.bottishamvc.org/adultlearning

Tel: 01223 811372

Email: adultlearning@bottishamvc.org

Facebook: [BottishamAdultCommunityLearning](https://www.facebook.com/BottishamAdultCommunityLearning)
or Twitter: [@CommunityEdBott](https://twitter.com/CommunityEdBott)

Tales from a Reach Garden

Gardening is full of surprises, most of them are delightful but at least once a year something disturbing happens but one can never tell what it is likely to be. After one of the best onion and garlic crops we've ever had thanks to last year's long, hot dry summer - our leeks have had a disastrous winter and they had a really good start too.



So why is this significant and why am I linking onions, garlic and leeks together? Well, leeks, garlic and onions are all alliums and related to the ornamental alliums some gardeners grow in their flower beds. I deliberately avoid growing leeks where I have grown onions or garlic in the previous 24 months, just in case any pests and diseases are lurking in the soil. So, imagine mine and Richard's dismay when we went to pick some leeks in December and found a bedraggled mess which had been healthy (to our eyes at least) a week or so previously.

The weather had been dry throughout autumn but the leeks had been watered regularly. I did notice a few odd white spots on some of the leaves, which left me wondering what they were, but they looked insignificant and I put it down to possible wind damage.



Well, the dots I saw on the leaves (see above) were a tell-tale sign that an allium leaf miner fly had laid its eggs. A couple of weeks later, those dots became dashes, but I shrugged my shoulders and continued watering not realising their significance. The leeks still looked healthy and robust – one of the best lot of leeks we'd ever grown. Some of the larger leeks we picked in late November showed no apparent signs of problems. If I had looked closer at the upper darker leaves, I might have spotted something, but I cut away and composted those bits and didn't look too closely - and the edible white shanks looked healthy enough. It may have been that those leeks had escaped fly damage which is why they were bigger than the others.



Healthy Leeks - in October



The same leeks in December

In December we couldn't pull up leeks because they shredded in our hands where they had rotted, so we lifted those and noticed some small insects (looking like tiny brown beetles) burrowed in the main body of each leek. In fact, what I assumed were small brown "beetles" were the pupae of the allium leaf miner and the worst of the damage had been carried out the couple of weeks previously by the tiny white maggots, which were pupating by the time we wanted to eat the leeks in December.

We lifted all the leeks by the end of December and poor Richard (I had the flu) spent a lot of time peeling away damaged leaves so that we had some leeks to eat at least, though they are a very sorry looking bunch of leeks and much smaller than they would have been if they hadn't been infested.



Allium leaf miner pupae within leek

The allium leaf miner is a relatively new pest to Britain, first detected in the midlands in 2002. It has spread more widely since then becoming a major pest of leeks, onions and garlic. Apparently the first generation of female flies lay their eggs on the stems and base of leaves during March to April. Our onions and garlic were unaffected, so these may have affected ornamental alliums, or some other onions grown nearby. The second generation repeats the process in October to November and this appears to be the most damaging, which is why it is more likely to be observed in leeks and overwintering onions and garlic.

The fly larvae (or maggots) do most of the damage by munching within the leaves (under the outer skin, which is why it is called a leaf miner) towards the more succulent parts of the plant in the main shank of the leeks or the bulbs of onions and garlic. All too often, they aren't detected until fungal rots set in where the plant has been damaged. There are no pesticides available for home growers to use and I would be very reluctant to use them if they were. Covering the leeks (and garlic and onions) with a very fine mesh, or horticultural fleece to stop the flies physically from laying their eggs on the leaves is probably the only method available for home and allotment growers. The flies are tiny, about 3 mm long, so cheaper butterfly mesh would be useless.



A healthy clump of chard growing in December

It's not all doom and gloom in the garden, even if the sun has been less than forthcoming throughout December and early January. We have a lot of healthy leafy vegetables growing. The cabbages and kale have been growing nicely under the fine mesh we put in place to keep whitefly away. The chard has been green and succulent and thanks to the mild weather has been growing exceptionally well. I'm hoping the broccoli will crop well in spring as the plants are looking very healthy at the moment – fingers crossed!

Danuta Gibson

Burwell Bowls Club



Burwell Bowls section of the Ex Service and Social Club are looking for new members - so if you fancy bowls (any age is welcome) you can go along on a Tuesday evening at 6.15 pm and have a try or alternatively call Peter Green, chairman and secretary to have a chat.

Although bowls has an unfortunate reputation amongst many as an old person's game, in fact the leading players are mostly young! Peter recommends it is a game that you can take up in teenage years and carry on through to your 70's and 80's as it requires considerable skill but only modest physical fitness.

If any individuals or groups are interested in organising an evening try out, please call Peter Green to discuss on 01638 742665. These are great facilities right in the middle of Burwell – social activity right on your doorstep!

Peter Green

Food Focus



Winter Salads

If you, like me, have had enough of stodgy winter food and are craving freshness and crunch, you might like to try the recipes below. There are lots of wonderful recipes around now using raw winter vegetables, but the ones I've chosen are more accompaniments to a protein based dish rather than meals in themselves.

Cauliflower, Apple and Toasted Sesame Salad

Ingredients: Half a cauliflower, 1 apple, 1 large carrot or 2 small, 2 tablespoons of toasted sesame seeds, any fresh herbs that are available (coriander, parsley or basil) – chopped

Dressing: Greek yogurt, lemon juice, olive oil

Method: Break the cauliflower up into small florets and chop up the stalky bits and any larger chunks into cm square pieces. Grate the apple and carrots (or add the apple once the salad is dressed so that it doesn't go brown). Mix all the ingredients together and toss with the dressing.

Red Cabbage Coleslaw

Thomasina gave me this recipe a while ago. It's delicious but I can't remember the exact quantities so use your own judgement. There is a rough guide below. The crucial ingredients and those that make it different to a standard coleslaw are the green chillis and the addition of lime to the dressing.

½ a red cabbage
¼ a white cabbage
2 large carrots
1 small red onion
2 green chillis
2 handfuls of pumpkin seeds
1 handful of raisins

Dressing: Mayo or yogurt or combo of the two with the juice and zest of a lime

Moroccan carrot salad with orange and pistachio (Ottolenghi) - untried but looks delicious and is relatively simple for him

The orange blossom is a lovely addition to the dressing, but don't buy a whole bottle just for the sake of a quarter-teaspoon. This salad is still lovely without it. Serves four.

Ingredients:

650g carrots, peeled and coarsely grated
2 oranges, peeled and cut into 1cm pieces
½ small garlic clove, peeled and crushed
50g pistachios, toasted and chopped
20g coriander leaves
15g mint leaves

For the dressing:

3 tbsp olive oil
¼ tsp orange blossom water (optional)
2 tsp honey
1½ tsp cumin seeds, toasted and lightly crushed
Finely grated zest of 1 lemon
3 tbsp lemon juice
Salt and freshly ground black pepper

Whisk the dressing ingredients in a bowl with half a teaspoon of salt and a good grind of pepper. Add the salad ingredients, toss to coat and serve.

Raw Beetroot, dill and mustard salad (Nigella) – again untried.

This sounds great despite the long description and the fact you have to get out the food processor, which puts me off immediately. However, beetroot is seriously hard work to grate and verging on dangerous when straight out of the ground so maybe it is worth the effort.

Ingredients: 1 bunch fresh dill (chopped), 500 grams raw beetroot (peeled weight), juice of 1 lemon, 2 tablespoons extra virgin olive oil, 2 tablespoons mustard seeds, 1 tablespoon chopped fresh flat leaf parsley (optional)

Method:

1. I always make this in the food processor, not because it's necessary, but just because it makes life easier. Put quite a wedge of dill, without stalks, in the processor with the double-bladed knife fitted and blitz till finely chopped. About 6 tablespoons / one-third cup seems to me the right amount for this quantity of beetroot, but a bit here or there makes no difference.
2. Scrape it out into a large bowl (keeping a small amount on one side for sprinkling later) and then fit, if you have one, the julienne disc, or if not, the grater disc. Peel the beetroot and chop it into chunks that will fit down the funnel; I use rubber gloves for this, so I'm not like Lady Macbeth with my incarnadined hands forever.

3. When all the beetroot is grated, turn it into the bowl with the dill and toss so both are mixed well together. Squeeze the lemon juice over, drizzle in the olive oil and toss again. When everything is well but lightly combined, put a non-stick or heavy-based frying pan on the heat and toast the mustard seeds for a couple of minutes. Add to the beetroot and dill salad and, again, toss well. Turn out to a bowl or plate - I always prefer salads on a plate - and scatter your little bit of reserved dill over, adding a little chopped fresh parsley, if you have some to hand, for a final uplifting hit of more vibrant green.

Ps Foody Markets & Events happening near you this month

Ely Farmers Market 2nd and 4th Saturday of the month (8.30 - 2), February 9th & 23rd and March 16th & 30th. They now have a "Vegan Alley".

Bury St Edmunds hosts a monthly farmers market. Held on The Traverse on the second Sunday of every month (10th February & 10th March), you will find freshly baked local bread, honey, homemade pies and savouries, and delicious cakes and fudge.

Catherine Gibson

**Mothering Sunday
Thanksgiving Service**



**Sunday 31st March
10 am
at St Mary's Burwell
All welcome!**

Flower posies will be given out

Letter from the Vicarage

An important part of my job is to pray with and for people, for the community and for the world. Sometimes it's really hard to know how or what to pray and to keep going, particularly when there often seems to be so much conflicting noise - both around us, and within us.



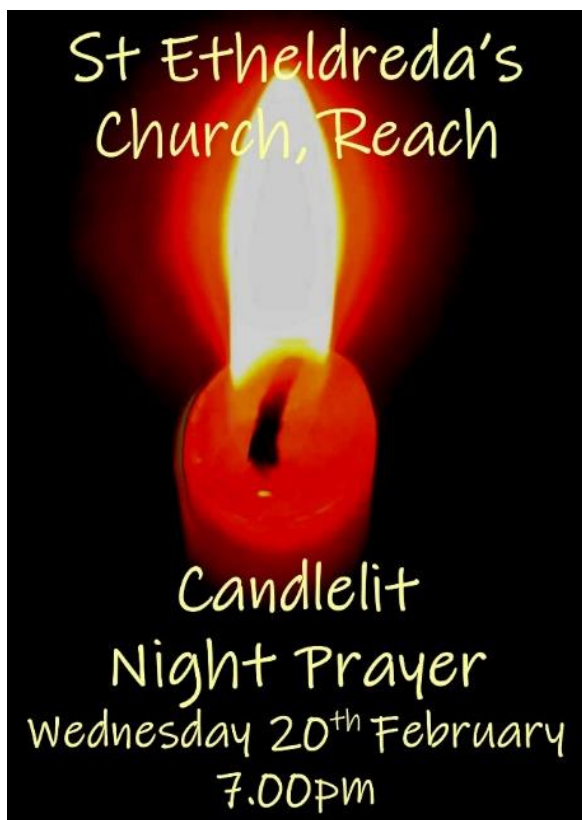
One of the things that helps me is to pray together, as we do at St Mary's & St Etheldreda's, week by week, for community and world issues. With all the turmoil and conflict in the world, we pray each week for peace, and we will be praying for our country, in this time of uncertainty. If you are a person who prays, whatever your political views, perhaps you would join us in praying for grace and generosity, for national unity - and courage, integrity and clarity for our politicians. If you would like to join us to pray, look out for times on our weekly 'pew sheet' newsletter and on our Facebook pages and website. We are planning another Candlelit Night Prayer in St Etheldreda's on Wednesday 20th February at 7pm, and another in March, and anyone is welcome to join us.

Alongside our regular activities we have some special events coming up. For 6 weeks from January 27th - March 3rd we will have a shared theme across all our services of 'A Way of Life', which will include a weekly afternoon gathering 'Go AWOL' for children, young people and families, from 4.00 - 5.30pm at St Mary's. Then on Sunday 31st March at 10am at St Mary's is our Mothering Sunday Thanksgiving Service, when posies of flowers will be given out. More details of our Easter services will be in the next edition of Clunch. Please get in touch if you would like more information about these or any of our events or services, including weddings, christenings or a baby thanksgiving service for the gift of a child, or to find out more about the Christian faith, or just if you'd like a chat. All are welcome.

A final word to say that we are making steady progress with finalising the detail and beginning the process of obtaining the necessary permissions for the redevelopment work on the church and the repair works on the church and grounds.

Revd Dr Eleanor Williams, Vicar of Burwell with Reach
01638 741262 vicar@stmarysburwell.org.uk

Revd Dr Eleanor Williams
Vicar of Burwell with Reach,
01638 741262
vicar@stmarysburwell.org.uk



Reach Riders



The Reach Riders Group Committee consists of:

Sadie King (Chair)
Sue Cameron (Secretary)
Claire Halpin
Gemma Rolfe
Liz Tabecki

Anyone interested in joining should contact Sue Cameron for a membership form, terms and conditions and disclaimer. Email ewenandsue@btinternet.com or Tel 07879 627859

Know Your Parish Council

Your councillors are:

Nathan Bridgeman	Councillor	07525 950568
Charlotte Cane	Chair	741064
Alex de Giorgio-Miller	Councillor	07771 348013
Hilary Fielding	Vice Chair	741853
David McMillan	Councillor	741259
Andrew Trump	Councillor	07980 955490
Diana Ward	Councillor	744210
Allan Alderson	District Councillor	741744
Joshua Schumann	County Councillor	

Your Clerk is Susan Bailey
29 Great Lane Reach CB25 0JF; 01638 743794
clerk@reachparishcouncil.org

All Grant Fund applications should be made to Susan.

Meetings take place in the Village Centre on the first Wednesday of each month. They start at 7.30pm and all Reach villagers are welcome to attend.

Reach Grant Fund

The Grant Fund replaces the Amenity Fund and exists to fund community activities in Reach.

Applications should be sent to the Parish Clerk:

Susan Bailey, 29 Great Lane Reach CB25 0JF
01638 743794 clerk@reachparishcouncil.org

Parish Council Meeting Minutes

Minutes of Reach Parish Council meeting held on: Wednesday 5th December 2018.

Attendance

Charlotte Cane	Chair	Present
Hilary Fielding	Vice Chair	Present
Alex de Giorgio-Miller	Councillor	Present
Diana Ward	Councillor	Present
Andrew Trump	Councillor	Present
David McMillan	Councillor	Present
Nathan Bridgeman	Councillor	Present
Susan Bailey	Clerk	Present
Allen Alderson	District Councillor	Present
Joshua Schumann	County Councillor	Present

Apologies for absence

There were none.

1. Declaration of Interests

Councillor cane declared a non-pecuniary interest in the Vine House planning, Councillor Ward declared an interest in The Great Lane planning and Councillor McMillan declared an interest in the Highways discussion.

Forum for members of the public.

A large number of residents attended the meeting to discuss the Vine House and Burwell Road planning applications. The residents are very much against the felling of the trees with TPO's on these sites and are concerned about damage to the remaining trees. There was unanimous objection to both applications due to the access issues, increase in large properties, the additional demand on sewage facilities, the highways dangers created on a 60mph road without pavement and the fundamental change this will create to the village layout.

A resident also stated that she felt that the way in which the PC communicated with the village was not adequate. She stated that at present the PC sent the agenda out to its email list, posted it on Facebook, put onto the village website and put up copies in the two village bus stops. However it was felt that this was not enough and that the PC needs to attempt to collect more email addresses and reach more residents.

2. Planning Applications

Following discussion using the material planning considerations the PC decided to submit the following comments to ECDC planning –

18/00905/FUL Amendment – Part demolition & refurbishment of existing building and construction of 3 residential units, Vine House 6 Fair Green

- Loss of Sunlight – The new trees and hedging may become an issue in the long term.
- Highways issues – Access and safety are a major concern. The access road is narrow and opens on to a 60mph road just past a bend without pavement or street lighting. The widening of the access road is on to land not owned by the applicant. The amendments do not improve the safety issues on this section of highway which are exasperated by application 18/01554/OUT. There will be an increase in parking and pedestrians on this stretch of 60mph road. Additionally, there is likely to be an increase in parking along Fair Green due to this development. Bins having to be taken to Fair Green has not be addressed this is a completely impractical solution. The distance for some households to drag their bins to the roadside would exceed the recommended maximum.

- Physical infrastructure – The sewage system for the village does not always cope with current demand, causing problems for residents near the pumping station. Additional housing will add to these problems.
- Storage & handling of hazardous materials – There is no mains gas and many villagers use oil for their heating. If these new houses also use oil, there will be a large increase in oil storage tanks in this area of the village, each of which need the correct space and it is uncertain this can be provided. There will be an increased fire risk. Oil tankers will also need to be able to access the site.
- Loss of trees – The tree that will be felled does not belong to the applicant. The tree that will be felled to allow access has a TPO as part of a wider line of mature trees important individually and as part of the landscape. The access road trees should be looked at as a row of limes not as individual trees. The remaining TPO trees & their branches alongside the access road will be adversely affected by the construction traffic and by the work to widen the access road right up to the tree line to meet highways requirements. This application goes against the newly established tree strategy at ECDC.
- Incompatible – this development is incompatible with other adjacent proposed developments currently being considered by ECDC due to inconsistency in plans.
- Layout & density of building design – The new buildings will be clad in wood this is out of keeping for the area. A clunch finish would be much more appropriate.
- Many properties in the area suffer from movement and some have been underpinned. The extensive building in the area is likely to add to this problem.

Given that two adjacent applications are being consulted on, both sharing the same access with the same issues of access, highway safety, tree damage and noise, the cumulative effect should be considered. The PC also has concerns about a precedent being set, noting that the areas between and further on from the two current planning applications could also be considered for development in the future, further exacerbating the issues outlined in this objection.

The PC was also concerned that should any buildings go ahead that work is restricted to only during the working day as the site is close to neighbouring houses.

If the Council is minded to approve this application, the Parish Council requests that the decision should be referred to the Planning Committee

18/01554/OUT - Outline application for access approval for up to 4 dwellings, site NW of 9 Burwell Road.

- Local Strategic, national planning policies – This site is outside of the development envelope and is backland development.
- Government & Planning inspectorate requirements – No ecology report included.
- Overlooking & loss of privacy – This is uncertain. There is a potential problem for 9a & 9b Fair Green, 7 & 9 Burwell Road, and also the new proposed development on the adjacent site.
- Highways issues – Access and safety are a major concern. The access road is narrow and opens on to a 60mph road just past a bend. Bins having to be taken to the Burwell Road and left at the road side are also a problem as there is nowhere to leave them. The waste lorries will be parked on the Burwell Road, in a 60mph section, to clear the large number of bins on collection day. The distance for households to drag their bins to the road would exceed the recommended maximum. There is a lack of direct safe pedestrian access to the Village Green, and local playground for families. Residents and their children would have to walk down the track and along the Burwell Road within a 60mph limit, without a pavement or street lighting, to get to the village centre/green/playground. A lack of parking spaces for these large houses will result in vehicles being parked on the 60mph stretch of the Burwell Road.
- Noise & disturbance – Increase in traffic noise on the narrow access track & family activity affecting 9 Burwell Road.
- Physical infrastructure – The sewage system for the village does not always cope with current demand, causing problems for residents near the pumping station. Additional housing will add to these problems. The proposed sewage route runs very close to 7 Burwell Road.
- Deficiencies in social facilities – Lack of space in local schools and doctor's surgeries. Lack of public transport and other facilities within the village.
- Storage & handling of hazardous materials – There is no mains gas and many villagers use oil for their heating. If these new houses also use oil, there will be a large increase in oil storage tanks in this area of the village, each of which need the correct space and it is uncertain this can be provided. There will be an increased fire risk. Oil tankers will also need to be able to access the site.

- Loss of trees – The tree that will be felled to allow access has a TPO as part of a wider line of mature trees important individually and as part of the landscape. The access road trees should be looked at as a row of limes not as individual trees. Additionally, a lot of other trees on the site have TPO's which have not been mentioned in the application. The remaining TPO trees & their branches alongside the access road will be adversely affected by the construction traffic and by the work to widen the access road right up to the tree line to meet highways requirements. This application goes against the newly established tree strategy at ECDC.
- Adverse impact on nature conservation interests and biodiversity opportunities – an ecology survey has not been conducted but there are reports of a range of wildlife inhabiting this area including hedgehogs and owls.
- Incompatible – this development is incompatible with other adjacent proposed developments currently being considered by ECDC due to inconsistency in plans.
- Layout & density of building design – The new buildings are large executive houses in a cramped development. This type of housing is not required in the village. This development will fundamentally change the layout of the village being an enclave, separate from the village centre with no link to it. The current houses in the village are around the Village Green or along roads radiating from the Green.
- Many properties in the area suffer from movement and some have been underpinned. The extensive building in the area is likely to add to this problem.

Given that two adjacent applications are being consulted on, both sharing the same access with the same issues of access, highway safety, tree damage and noise, the cumulative effect should be considered. The PC also has concerns about a precedent being set, noting that the areas between and further on from the two current planning applications could also be considered for development in the future, further exacerbating the issues outlined in this objection. The PC was also concerned that should any buildings go ahead that work is restricted to only during the working day as the site is close to neighbouring houses.

If the Council is minded to approve this application, the Parish Council requests that the decision should be referred to the Planning Committee.

18/01624/FUL – Demolition of modern stables & replacing with 1 / 2 bed single storey dwelling, site NE of 30 Great Lane

- This development is outside of the village envelope and should be considered as backland development.
- Planning Requirements – Ecology report is not supplied. This is important due to the fen edge location.
- Highway issues – Blackberry Drove is a byway and not a surfaced road, improvements to the surface may be required, with the additional vehicular used.
- Loss of Outlook – There will be a loss of rural outlook from the Drove.
- Physical infrastructure – There is concern that the bridge across to Blackberry Drove is structurally sound enough to take the additional traffic and the construction traffic.
- Nature Conservation – Again, ecology report is not supplied. This is important due to the fen edge location.
- The Parish Council supports the building of smaller, retirement style properties within the village.

3. Consideration of setting up a Community Land Trust for Reach

Following discussion, the PC decided that they should not move forward with this idea.

4. Neighbourhood plan – To receive updated information

Nick Acklam made a short presentation regarding his research on this subject. Having spoken with many people at agencies and similar sized villages who had experience in this process, he concluded that it would be beneficial for Reach to have a Neighbourhood plan, to allow the community to have a greater influence over development in the future.

6 – 10 committed people will be required to carry this plan forward. There will be an initial cost of £400 to the village all other costs should be covered by grants.

A further presentation will take place at the January 2nd meeting.

5. Highways – Great Lane / Fair Green bend

A large amount of information had been supplied to the PC and this in turn had been forwarded to Councillor Schumann at County Councillor. This is a very long-term problem and the PC concluded that doing nothing to alter the situation was not an option. Initially the PC will accept the offer from Councillor Schumann for the highways engineer to visit both site and the PC meeting.

6. County Councillor Report

None received.

Councillor Schumann discussed the benefits of a Neighbourhood plan to allow the village residents to have some say over future building. He also stated that at the moment applications were being approved outside of the previous development envelopes, and that it did not matter what type of housing this was.

Councillor Schumann also stated that he had forwarded the highways issue at the Great Lane Fair Green bend to the highways department and was awaiting a response. He will arrange for the highways engineer to visit the site and then report back to the PC meeting.

7. District Councillor Report

As this year draws to a close, I would like to reflect on what I think has been a successful year for us elected members and our hard-working officers and staff.

- We have built a leisure hub on the Ely bypass that includes a 6-screen cinema, a 6 lane swimming pool and learner pool, an all weather sports pitch, a fitness suite, a badminton court, together with a range of eateries.
- Extended the Angel Drove commuter car park
- Put a million pounds of council funding towards the Ely southern bypass which since opening has eased traffic congestion at the railway crossing gates which are now permanently closed.
- Set up hubs at Ely and Littleport where our residents can seek advice on housing and other problems at an early stage, thereby significantly reducing the number of people becoming homeless
- Supported Community Land Trusts in our district as a way of providing affordable housing for local residents to buy or rent
- Taken the waste collection and street cleaning contracts in house. It is now costing less, giving a saving to our council tax payers.
- Arranged visits to several of our local companies to see how the council can be of help to them.
- Continues free car parking in our district at all our car parks except for Angel Drove commuter car park which is chargeable

We have been able to achieve all the above whilst also giving our residents another year of no council tax increase.

As I look forward, I hope that 2019 is as successful, we shall certainly not be resting on our laurels, there is still much to be done.

8. Minutes of previous Meeting

Approved as correct.

9.1 Reach Grant Fund

Nothing to report.

9.2 Finance

Nothing to report.

9.3 Parish Council Members

Nothing to report.

9.4 Play Spaces

New playground:

Dog fouling signs – large A4 one on the gate to replace current one, and one on the playground railings.

Old playground area development:

Tesco bags of help application successful and will be put forward to customer vote in Jan-Feb 2019. We will find out at the end of March 2019 how much funding we will receive (£4000, £2000 or £1000). An article went into the magazine to publicise this. A Facebook post and email asking people to vote for us will be sent in January.

Postcode local trust funding by the Reach Village Centre Committee unsuccessful.

Planning to apply to National Lottery Awards for All scheme for £10,000. Takes 14 weeks for a reply. Total cost of development of picnic area = £12,950 (+£547 x2 benches in playground = £14,044). If we are successful in this bid, then it depends on how much funding we get from Tesco as to whether we are fully funded or not.

9.5 Rights of Way

The Prospect Trust quote to cut the hedge along the pathway between Reach Wood and the Byway at the back of Ditchfield was discussed and approved. **Clerk** to arrange.

9.6 24Acres Committee

Nothing to report.

9.7 Friends of Reach wood

It has become too late for the second cut of the meadow. A more exact plan will be put in place for next year.

9.8 GDPR

Work continues to ensure the PC fully complies with this legislation.

10. Information Items/AOB

There were none.

11. Payments

N Bridgeman – Halloween Disco – Grant fund	£48.58
Birketts – Solicitor on account	£600.00

END

***DRAFT* Minutes of Reach Parish Council meeting held on; Wednesday 2nd January 2019**

Attendance

Charlotte Cane	Chair	Present
Hilary Fielding	Vice Chair	Not Present
Alex de Giorgio-Miller	Councillor	Present
Diana Ward	Councillor	Present
Andrew Trump	Councillor	Present
David McMillan	Councillor	Present
Nathan Bridgeman	Councillor	Not Present
Susan Bailey	Clerk	Present
Allen Alderson	District Councillor	Not Present
Joshua Schumann	County Councillor	Not Present

Apologies for absence

There were none.

1. Declaration of Interests

There were none.

Forum for members of the public.

A resident raised the issue of traffic using the village as a cut through whilst there are road works in Burwell. The PC said that the situation should be monitored. Data would also be useful for when the Weirs Drove site opens. **Clerk** to contact Swaffham Prior PC to see if it is possible to borrow their speed monitor.

A resident asked what the situation was regarding the Anglia water works on the Hythe. The PC referred to the information given in at the November meeting *“Councillor Trump had received communications from Anglian Water, regarding the land on The Hythe, stating that “there is little scope to release the land for other purposes”. The PC find this disappointing and will continue communications.”*

It was noted that the road sign on the Green had been knocked down. Clerk stated that this had already been reported to Highways at CCC.

Several residents attended the meeting to discuss the Burwell Road planning application. The residents are very much against the felling of the trees with TPO's on these sites and are concerned about damage to the remaining trees. There is concern about the bin area and the impact on safety.

2. Planning Applications

18/01554/OUT – Amendment - Outline application for access approval for up to 4 dwellings, site NW of 9 Burwell Road.

Reach Parish Council would like to make the following comments to the amendments to this application.

The Parish Council reserves the right to comment again should the application be updated or changed.

The Parish Council notes that these amendments do not address all the points raised against this application.

- The Parish Council is very concerned about the impact on the trees, in particular those with TPO's. The new report attached to this amendment states there will be “possible damage” to a large number of trees on the site with TPO's attached.
- 1. G1 (TPO G2 - Limes)
- 2. T6 (TPO T3 – Walnut)
- 3. T5 (TPO T4 – Tree of heaven)
- 4. T13 (TPO T1 – Cherry)
- 5. T12 (TPO T2 – Walnut)
- 6. T10 & T9 (TPO G1 – Poplars)
- The TPO G2 is for the Row of Limes not the individual trees. Loss of any of these will affect the landscape as you enter the village and should not be destroyed.
- There is concern that more trees will need to be felled to allow for the road side bin area.

Given that two adjacent applications are being consulted on, both sharing the same access with the same issues of access, highway safety, tree damage and noise, the cumulative effect should be considered. Further, the Parish Council asks that the comments above are considered in relation to the second application for land behind Vine House 18/00905/FUL

The PC also has concerns about a precedent being set, noting that the areas between and further on from the two current planning applications could also be considered for development in the future, further exacerbating the issues outlined in this objection.

The PC was also concerned that should any buildings go ahead that work is restricted to only during the working day as the site is close to neighbouring houses.

If the Council is minded to approve this application, the Parish Council requests that the decision should be referred to the Planning Committee.

3. Neighbourhood Plan

Nick Acklam made a short presentation regarding his research on this subject. Having spoken with many people at agencies and similar sized villages who had experience in this process, he concluded that it would be beneficial for Reach to have a Neighbourhood Plan, to allow the community to have a greater influence over development in the future.

Councillor Cane recommended that a PC neighbourhood plan committee be set up, Councillors Cane & Ward to join. Councillor Cane proposed that Nick Acklam & Catherine Gibson be co-opted to the committee, approved. 3 residents at the meeting wished to become involved. **Councillor Cane** to organise a meeting of this committee. **Councillor Cane** to check whether Nick Acklam is able to Chair this committee.

4. County Councillor Report

None received.

5. District Councillor Report

None received.

6. Minutes of previous Meeting

Approved as correct.

7.1 Reach Grant Fund

Nothing to report. **Clerk** to ensure the new form is on the website.

7.2 Finance

Nothing to report.

A separate meeting will be held to discuss the budget and setting of the precept. **Clerk** to check the precept submission date.

7.3 Parish Council Members

Councillor Trump had looked into an online network "Nextdoor". **Councillors** to look at the site to evaluate how useful it maybe.

7.4 Play Spaces

New playground:

Nothing to report.

Old playground area development:

Tesco bags of help customer vote for funding in Jan-Feb 2019. We will find out at the end of March 2019 how much funding we will receive (£4000, £2000 or £1000). Facebook post and email asking people to vote for us will be written and sent.

Application to National Lottery Awards for All scheme for £10,000 submitted 12/12/2018. Should hear back within 10 weeks.

7.5 Rights of Way

Nothing to report.

7.6 24Acres Committee

Permission had been given, by the Clerk, for a replacement tree to be purchased.

7.7 Friends of Reach wood

A more exact timetable for the cutting of the meadow will be implemented this year.

7.8 GDPR

The Clerks work on this has now finished.

8. Reach Lode

Councillor Ward & the Clerk are in the process of meeting with GOBA, to see what can be done with this area.

9. Information Items/AOB

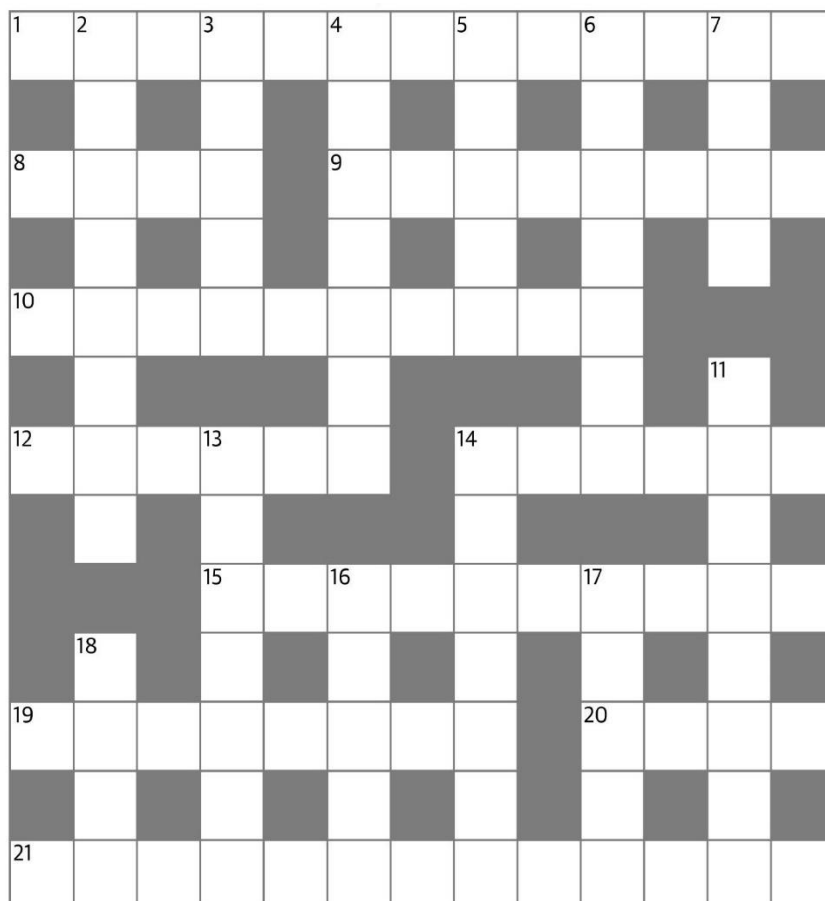
There were none.

11. Payments

S Bailey – Clerk salary	£1410.18
Village centre – Shed use for storage	£720
CR Contracting – Mowing & tree cutting	£600
N Acklam – Postage 24Acres	£6.50
E. on – power on the green	£20.51

The date of the next meeting will be Wednesday 6th February 2019 at 7.30pm. The Agenda for the meeting will be issued by the previous Wednesday and can be accessed from the Parish Council area of the Reach website (www.reach-village.co.uk).

Crossword



Across

- 1** Someone willing to trade favours for mutual advantage? (13)
8 Open pastry case (4)
9 Somewhat unreasonable or OTT (1,3,4)
10 Sleuth (10)
12 Source of danger (6)
14 Disturbance (6)
15 Urchin (10)
19 Unpredictable factor (4,4)
20 Skating jump with a turn (4)
21 Another item? (9,4)

Down

- 2** Signal that it's safe to come out (3,5)
3 Japanese martial art using split bamboo swords (5)
4 Was incompatible (7)
5 Bye (5)
6 Funny (7)
7 Per person (4)
11 Commercial activity (8)
13 Curtail (7)
14 Islam's holiest month (7)
16 Grind (one's teeth) (5)
17 Burner – passion (5)
18 Cylindrical storage tower (4)

Church Services at Burwell and Reach

February 2019	St Mary's Burwell	St Etheldreda's Reach
Sunday 3rd Presentation in the Temple	8.00 am Holy Communion 10.00am All Age Service 4.00pm Messy Church - Go AWOL	
Wednesday 6 th	10.00am Holy Communion 11.00am Holy Communion at Ash Grove	
Thursday 7 th		8.15 am Morning Prayer
Sunday 10th 4th before Lent	10.00am Holy Communion 4.00pm Messy Church - Go AWOL 7.00pm Sunday @ 7	8.00am Holy Communion
Wednesday 13 th	10.00am Holy Communion	
Thursday 14 th		8.15am Morning Prayer
Sunday 17th 3rd before Lent	8.00 am Holy Communion 10.00am All Age Communion 4.00pm Messy Church - Go AWOL	
Wednesday 20 th	10.30am Holy Communion at Ness Court	7.00pm Candlelit Night Prayer
Thursday 21 st		8.15am Morning Prayer
Sunday 24th 2nd before Lent	8.00am Holy Communion 10.00am Holy Communion 4.00pm Messy Church - Go AWOL	
Wednesday 27 th	10.00am Holy Communion	
Thursday 28 th		8.15am Morning Prayer
March 2019	St Mary's Burwell	St Etheldreda's Reach
Sunday 3rd Sunday before Lent	8.00am Holy Communion 10.00am Holy Communion 4.00pm Messy Church - Go AWOL	
Wednesday 6 th Ash Wednesday	10.00am Holy Communion 11.00am Holy Communion at Ash Grove 7.00pm Ash Wednesday Service	
Thursday 7 th		8.15am Morning Prayer
Sunday 10th 1st Sunday of Lent	10.00am Holy Communion 7.00pm Sunday @ 7	8.00am Holy Communion
Wednesday 13 th	10.00am Holy Communion	
Thursday 14 th		8.15am Morning Prayer
Sunday 17th 2nd Sunday of Lent	8.00am Holy Communion 10.00 am All Age Communion	
Wednesday 20 th	10.30am Holy Communion at Ness Court	7.00pm Candlelit Night Prayer
Thursday 21 st		8.15am Morning Prayer
Sunday 24th 3rd Sunday of Lent	8.00am Holy Communion 10.00am Holy Communion	
Wednesday 27 th	10.00am Holy Communion	
Sunday 31st March 4th Sunday of Lent Mothering Sunday	10.00am All Age Service	8.00am Holy Communion

Bus Timetable

Reach is served by the Stagecoach number 11 bus service - summary of all buses serving Reach is shown below.

Please note that there is no bus service at all on Sundays

Cambridge to Bury - Monday to Friday (excluding Bank Holidays)				
Cambridge Drummer Street	Reach	Burwell Ness Road	Newmarket Bus Station	Bury Bus Station
06:50	07:35	07:45	08:17*	08:49
07:50	08:35	08:45	09:17*	09:49
09:50	10:35	10:45	11:17*	11:49
11:50	12:35	12:45	13:17*	13:49
13:50	14:35	14:45	15:17*	15:49
15:50	16:42	16:52	17:24	17:55
18:15	19:00	19:10		
19:15	20:00	20:10		

Cambridge to Bury - Saturdays (excluding Bank Holidays)				
Cambridge Drummer Street	Reach	Burwell Ness Road	Newmarket Bus Station	Bury Bus Station
06:50	07:35	07:45	08:17*	
07:50	08:35	08:45	09:17*	09:49
09:50	10:35	10:45	11:17*	11:49
11:50	12:35	12:45	13:17*	13:49
13:50	14:35	14:45	15:17*	15:49
15:50	16:35	16:52	17:17	17:55
18:15	19:00	19:10		
19:15	20:00	20:10		

Bury to Cambridge - Monday to Friday (excluding Bank Holidays)				
Bury Bus Station	Newmarket Bus Station	Burwell Ness Road	Reach	Cambridge Drummer Street
		06:14	06:29	07:22
		06:39	06:54	07:50
	08:40	09:08	09:23	10:13
10:05	10:35*	11:08	11:23	12:13
12:05	12:35*	13:08	13:23	14:13
14:05	14:35*	15:08	15:23	16:13
15:05	15:35*	16:08	16:23	17:13
16:05	16:35*	17:08	17:23	18:13
17:05	17:35*	18:08	18:23	19:13

Bury to Cambridge - Saturdays (excluding Bank Holidays)				
Bury Bus Station	Newmarket Bus Station	Burwell Ness Road	Reach	Cambridge Drummer Street
		06:19	06:34	07:22
		06:49	07:04	08:00
	08:40	09:08	09:23	10:13
10:05	10:35*	11:08	11:23	12:13
12:05	12:35*	13:08	13:23	14:13
14:05	14:35*	15:08	15:23	16:13
15:05	15:35*	16:08	16:23	17:13
16:05	16:35*	17:08	17:23	18:13
17:05	17:35*	18:08	18:23	19:13

* These are arrival times, buses will depart approximately 5-7 minutes later

A full timetable can be downloaded from www.reach-village.co.uk/bus_service.html

Diary Dates

Feb	Event	Location	Time
Wednesday 6	Parish Council Meeting	Village Centre	7.30pm
Thursday 7	Recycling Day (Green)		
Saturday 9	Burwell Farmers Market	Burwell	9.30am to 12.30pm
Saturday 9	Ely Farmers Market	Ely	8.30am – 2.00pm
Wednesday 13	Village Centre Committee Meeting	Village Centre	8.00pm
Thursday 14	Recycling Day (Blue)		
Friday 15	Mobile Library – Route C12	Village Green	2.20pm
Thursday 21	Recycling Day (Green)		
Saturday 23	Ely Farmers Market	Ely	8.30am – 2.00pm
Thursday 28	Recycling Day (Blue)		

Mar	Event	Location	Time
Wednesday 6	Parish Council Meeting	Village Centre	7.30pm
Thursday 7	Recycling Day (Green)		
Wednesday 13	Village Centre Committee Meeting	Village Centre	8.00pm
Thursday 14	Recycling Day (Blue)		
Friday 15	Mobile Library – Route C12	Village Green	2.20pm
Saturday 16	Burwell Farmers Market	Burwell	9.30am to 12.30pm
Saturday 16	Ely Farmers Market	Ely	8.30am to 2.00pm
Thursday 21	Recycling Day (Green)		
Thursday 28	Recycling Day (Blue)		
Saturday 30	Ely Farmers Market	Ely	8.30am to 2.00pm

Jobs

Bottisham Sports Centre are looking for a “CASUAL LIFEGUARD”

Apply within the Sports Centre at 1 Lode Road, Bottisham CB25 9DJ, ring them on 01223 811121 or email oswan-taylor@bottishamvc.org

Then and Now *(see opposite page for pictures)*

The infamous Winter of '63

This photo was taken from the then concrete footbridge on the Hythe looking North toward the 'Point'.

The vast majority of the Hythe was treeless then and of course the sewage unit did not appear until the late '60's.

The pole across the river was for additional entertainment during the annual tug of war contest held on the Hythe, open to all if you fancied your chances of getting across without a bath!

Chris Patterson

Contact Information

Parish Council – see “Know Your Parish Council”			
Village Centre			
	Chair	Andrew Towers	01638 742484
	Finance	Andrew Trump	01638 743335
	Bookings	Grahame Radford	01638 742814
	Marquee Bookings	Andrew Hall	01638 743737
Church			
	Vicar	Eleanor Williams	01638 741262
	Curate (duty days Wed, Fri and Sun)	Reverend Paula Spalding	07545 868549
	Priest in Retirement	Reverend David King	01638 742924
	Parochial Church Council Member	Pam King	01638 742924
	Churchwarden	Dr Stephen Martin	01638 611235
	Churchwarden at Burwell/Reach	Sarah Wingate	01638 742498
Emergencies			
	Electricity (Eastern Electric)		0800 783 8838
	Police (Emergency)/(Non-Emergency)		999/101
	Water (Anglian Water)		08457 145145
Doctors, Burwell			
	Appointments and Emergencies		01638 741234
	Enquiries		01638 743602
	Community Nurses		01638 742382
	Surgery Hours	Mon 8.30am to 6.00pm with extended hours on a Monday please phone the surgery for details	